

Missing page headers

## The BP5327 pen

By: Zahin Akif

Incomplete

— Look for Content and  
if it is moving in the  
direction of the assignment

# Table Of contents

Introduction.....	1
Components of the pen.....	2
Skeleton.....	2
Top half.....	#
Bottom Half.....	#
Ball point.....	#
Spear tip.....	#
Ink cartridge.....	#
spring.....	#
connector.....	#
piston.....	#

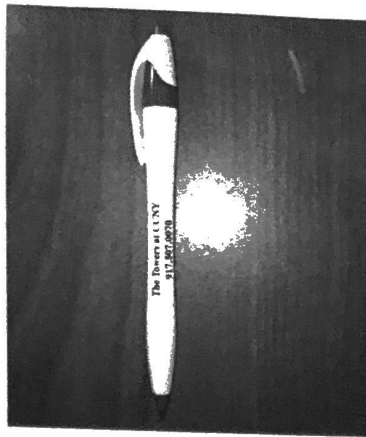
The Ballpoint pen is one of the most common types of pens found and used today. Many know of this pen and use it on a day to day basis but often times the history of it is forgotten. The ball point pen earns its name from the ball at its point which rotates when the tip is dragged across a surface. The pen since its conception invented and patented in 1888 in America by John J Loud. It wasn't until the early 20th century however that László Bíró, a news editor, teamed up with his brother Gyorgy, a chemist, to try and create a workable pen that dried quickly to avoid smudges. This new innovation sought to make writing more efficient and the process all the more pleasant. Together, the brothers made pen that combined viscous ink with a ball socket mechanism to create this feat. Despite their version of the pen still leaving a mark when used, they became the first steps of a longer journey for the ball point pen. Many individuals ~~however~~ did fail in trying to commercialize what the brothers had brought out in their findings and were met with very limited success.

Is this a person?

Buenos Aires in 1945 then redesigned the pen and gained an American patent. While selling the pen, he sold it with the reputation of not needing to be refilled for 15 years. The Miles Martin Pen company soon followed and brought ballpoints to Britain. Since then, more efficient ink formulas and cheaper ball points were used to mass produce what we see today as the Ball point pen. Different companies have adopted different items in the market to assemble their version of the ballpoint pen however, each have done so differently to the Ball Point 5327(BP54327).

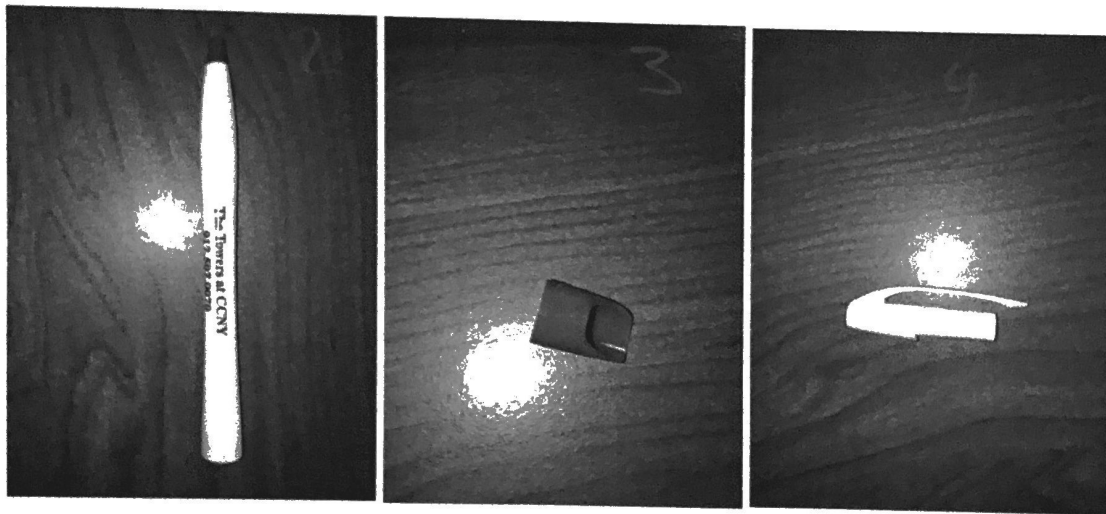
① Even when you paraphrase, you need to cite.

Put important  
yours in the body of  
sentences, not in  
parentheses.



← This  
pic has  
no label header.  
~~None of~~  
All of the pics  
need labels.

## Skeleton



The skeleton of the pen is what brings the pen together as a unit. Much like how our organs and inner workings are held together by our skin, the skeleton of the pen is what holds and keeps together this ball point pen. This is the outermost region of the pen and encompasses the bulk of the pen. This layer is made out of plastic, which although it is a cheap material, it makes the item

source?

heavily affordable costing just 26 cents per pen. The skeleton can be further broken down into two segments through inspecting the inner workings of a ballpoint pen. By first holding the pen vertically upward and then rotating counter-clockwise on clip, the pen can be unscrewed to examine these two major segments and the pen's components.

~~PIC NEEDS~~

The bottom portion of the skeleton contains the screw's ridges from which it is unscrewed. Encompassed by the bottom portion of the skeleton is the ink cartridge with the ballpoint, spring, and half of the connector. On this bottom portion, often times companies will place logos and trademarks to make themselves more well known and increase their business. This goes hand in hand with the material of a BP5327 being plastic and affordable making it a perfect pen to invest on financially.

~~PIC NEEDS~~

The top portion of the skeleton contains the threading of the cylinder to lock in with the bottom portion of the screw. Encompassed by the top portion of the skeleton is the other half of the connector, the piston to click, and the purple aesthetic

~~PIC NEEDS~~

The top skeleton extends outward to form a clip. This clip, matching the top color and material, is used to grip onto pockets and tiny gaps of fabrics. This allows easy accessibility for the functioning of the item as a whole.

The purple aesthetic is a portion of the pen that is a subsection of the top part of the skeleton as it is on the top exterior of the skeleton. The main purpose of this blocky cylinder is to add the

No Spaces btwn IPs!!! You need to reference the labels you use for your pics/parts.

aspect of color to the design of the pen with a sleek look. This contrast of color creates attention to the pen as it becomes more appealing and interesting with a variation from a monotoned color structure throughout.

2 Need a ~~reference~~ to a clear pic.

Starting from the first item at the bottom most interior section of the pen is the ball point. This is one of the most important parts of the pen when it comes to functionality. The ball point of the pen is what reacts when a collaroy motion is completed with a surface to bring out ink from the ink cartridge within. This part of the pen is made with a couple types of metals, that in all serve to rotate and deposit ink from the ink cartridge onto the paper. Name them



← What is this?

These pics are too dark. Perhaps a lighter background will help.

Connected directly to the ball point is a metal speartip which connects the ink cartridge to the ball point. The main role of this portion of the pen is to narrow and direct the flow of the ink into a focused point from which the ball can rotate on to produce ink on paper. This part of the pen is made up of metal as well and is rust resistant. The speartip is locked in its place and prevented

Which part?

Why?

from moving by usually glue with the ink cartridge but configurations with tight grips to click in the tips have also been used.



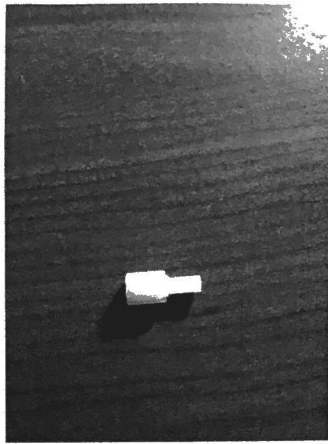
R

The ink cartridge is the next part of the pen which mainly stores the ink that is used to write.

From the ink cartridge, the spear tip directs the reserves to the ball point to provide a steady current of ink. The contents of a ballpoint ink is usually a paste containing 40-50% dye and is marketed as non-toxic. The ink stays compacted within the pen through the combination of the minimal space present for the ink to move and the high viscosity of the ink at about 10,000 to 25,000 cps.

why?

What does this mean to the end user?



The Ink cartridge is then grappled and connected to the upper portion of the pen through the plastic connector. The connector is the part of the pen that is attached to the end of the ink cartridge and is the direct link that connects it to the piston. Without this mechanism, the contents inside the pen would not feel any tension too keep the other parts up right and in line. This part is more of a connecting piece, as its name implies, yet it is still an important piece that the BP5427 cannot function without.

why? Lastly, at the very top of the pen is the piston. This portion of the pen is plastic and varies in color to add another layer of contrast. ~~This portion of the pen~~ allows the pen to have its advanced retractability feature. This prevents the pen from needing a cap, which can be troublesome sometimes if you lose it. Having this feature prevents stray marks from being made while the pen is not in use.

Need labeled references

Try writing about the benefits of the instead of the opposite.

What? Which feature, piston? Caplessness?



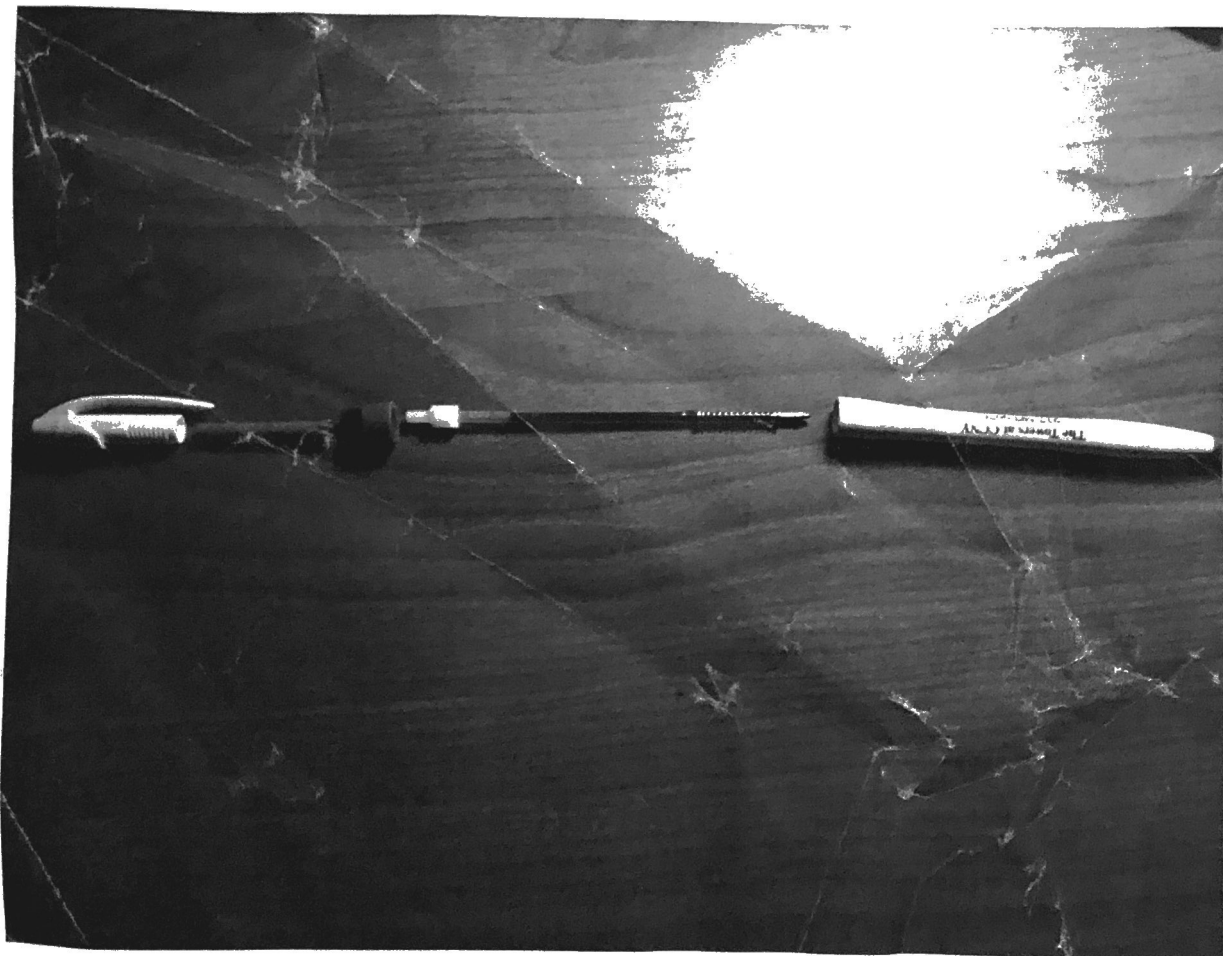
All of these parts come together to form what is known as the BP5327 pen and its functions. A pen is an instrument to record thoughts and ideas and the BP5327 takes this function and goes beyond. The efficiency of the cost of this material allows more people to be equipped with pens

allowing for people to have better access to pens. Through its main function of writing, the BP5327 takes it and extends this privilege to many people. The magnitude of ideas being written down and knowledge being transferred through the ball point is what this pen was made to do.

This pen can come useful in almost every department of writing like being a teacher, tutor,

student, accountant etc.

How?  
Perhaps  
afternoon  
add too  
much  
importance  
here.



The Components of a pen are each essential in their own regard to form what we know as the BP5327 pen. The breakdown of each component represents a lineage of history to what we have today. Each part of this pen is equipped with functionality to the entire structure as a whole, and it becomes apparent of the efficiency of this innovation. The cost efficiency, marketing aspect, affordability, and slim fit design make use of the materials given to rise in its respective field as well.

What's the difference

& Be sure ya have separately sufficiently addressed each of these benefits

Need details if not previously included.

Reference Links

<https://www.chemistryworld.com/news/ink-chemistry/3002158.article>

<http://www.historyofpencils.com/writing-instruments-history/history-of-ballpoint-pens/>

Usefully incomplete references